



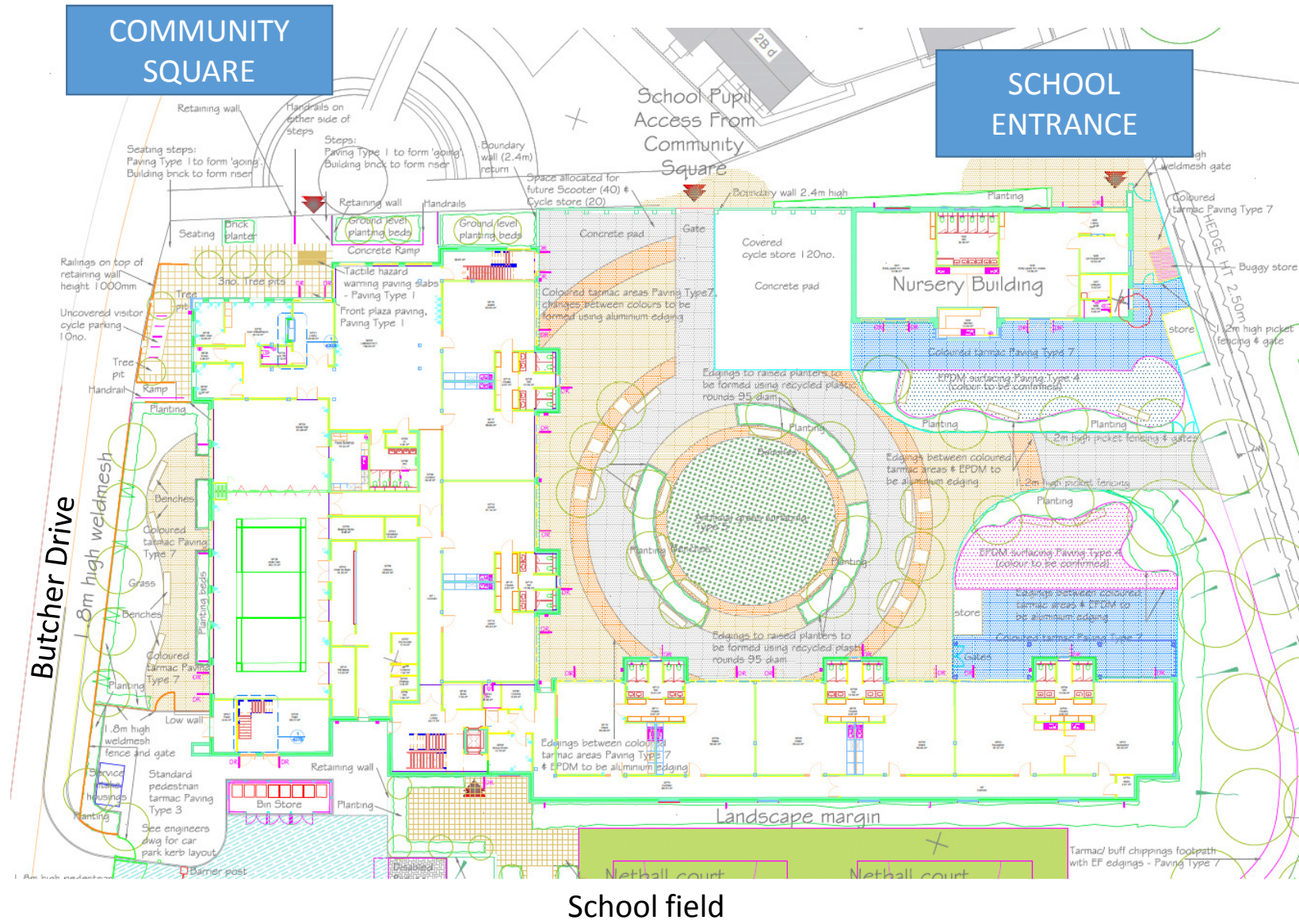
Moving to the new site:

Information for Parents



Access to the School

- What will the access arrangements be for the new site?
 - Phase 1: September 4th to October 25th
 - Access from the Community Square (see page 4), to the smaller school building – there will be signs to assist.
 - At the beginning and end of the school day access through the left side gate, through to the playground where teachers will meet you at 8.45am.
 - Phase 2: November 7th
 - Via the main school gates off the Community Square into the main playground at the beginning and end of the school day.
 - Via the main school office entrance of the main building at all other times.

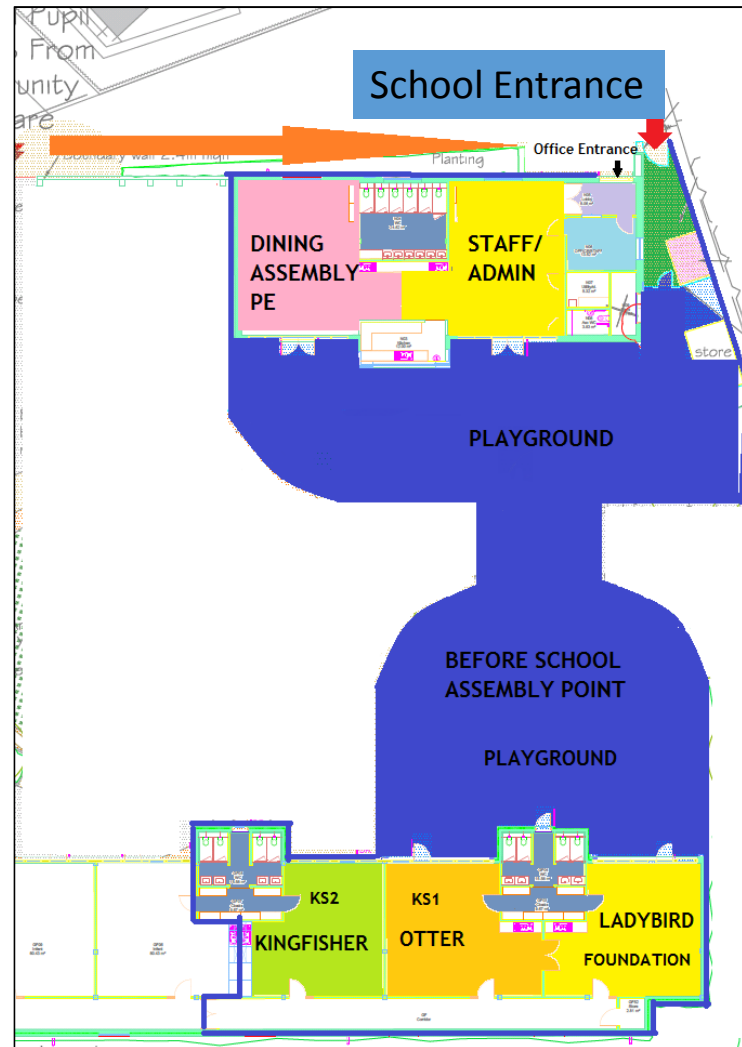


COMMUNITY SQUARE

Close up of school area for September – October 2017

The school use areas will be completely secure and fenced off from the areas where there may still be work going on.

The safety of the children is our top priority.



Times of the School Day

- What time will the school open and close?
 - 8.45am and 3pm initially.
 - **Soft Start**
 - Further into the school year we will bring in “Soft Start” which enables children to come into school slightly earlier if they wish, for a more gentle start to the school day. More information will be sent out before it is introduced.
- **Extended day**
 - Further into the school year there will be a variety of after school activities and clubs available, information will be sent out as they come along.

Drop Off – Pick Up

- Parking: Apart from a limited number of places in the Community Square, we do not have any allocated parking for parents.
- Those families that need to come to school by car will need to park along one of perimeter roads- See plan on page 8.
- When parking, please be mindful of residents.
- From November (Phase 2), we will have ample storage for bicycles and scooters. Obviously, we want to encourage as many pupils as is possible to travel to school by foot or pedal.



After and before school care:

- Kids Club: Childcare, provided by Godmanchester Kids' Club, will be available everyday from 7:45am, and between 3pm – 6pm.
- Costs: Fees are currently £2.50 for the morning session and between £4 & £6.50 for the evening session.
- Bookings are made directly with Club:
 - 01480 375011
 - gmckidsclub@hotmail.co.uk
 - www.godmanchesterkidsclub.webs.com





School Lunch

- Lunch will be supplied by our new catering partners Edwards & Blake.
- During phase 1, lunch will be prepared at the Community School and served hot at the Bridge.
- During phase 2, lunch will be served from the brand new kitchen.
- Cost and payment –
 - £2.20 for children in years 3-6; free for children in Foundation and years 1 & 2.
 - Payment can be made by cash, cheque or bank transfer. We will be bringing in an online payment facility as soon as possible.



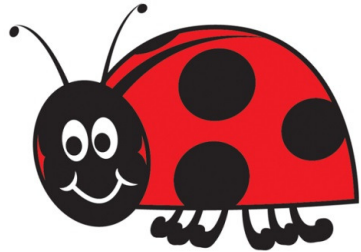


The Curriculum

- The aim of our curriculum is to provide an exciting and engaging learning experience for the pupils.
- We want the pupils to acquire strong Literacy and Numeracy skills, so they are be able to read & write fluently, as early in their lives as possible.
- We aim to use the space outside of the classrooms to maximise learning opportunities.
- The acquisition of a range of IT skills will be a priority.
- Creativity will be at the heart of our topic learning.



Classes and Teachers

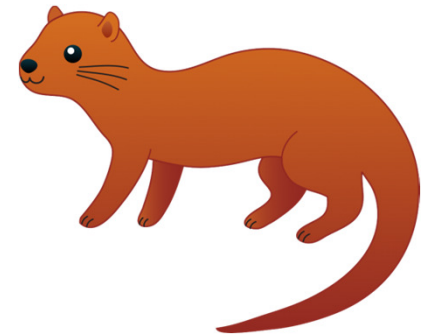


Ladybird

- **Foundation:** Laura Gaines (Teacher) ;
 - Jayne Sarath (Teaching Assistant)

Otter

- **Year 1&2:** Robyn Wilson (Teacher);
- Jessica Brading (Teaching Assistant)



Kingfisher

- **Year 3,4,5:** Rick Smith (Teacher);
- Kelly Farrington (Teaching Assistant)





Leadership & Administration

Leadership

- Rod Warsap : Executive Headteacher & Head of School
 - Claire Wood: Head of School
 - Rick Smith: Assistant Head of School

Administration

- Sarah Spira: Administration Manager
 - Catherine Cope: Office Assistant
 - Angela Kirkham: Office Assistant

It's come a long way in 9 months...



Pupil numbers /Future Growth

- For September 2017, we currently expect to have:

EYFS/Foundation: 18 pupils

Year 1 & 2: 15 pupils

Year 3, 4 & 5: 15 pupils

Total = 48 pupils

New admissions enquiries are coming in very regularly now so we expect the number to increase before September and throughout the school year.

Increasing numbers may mean we need to change structure of some of our classes during the school year but we will keep parents informed at all times.



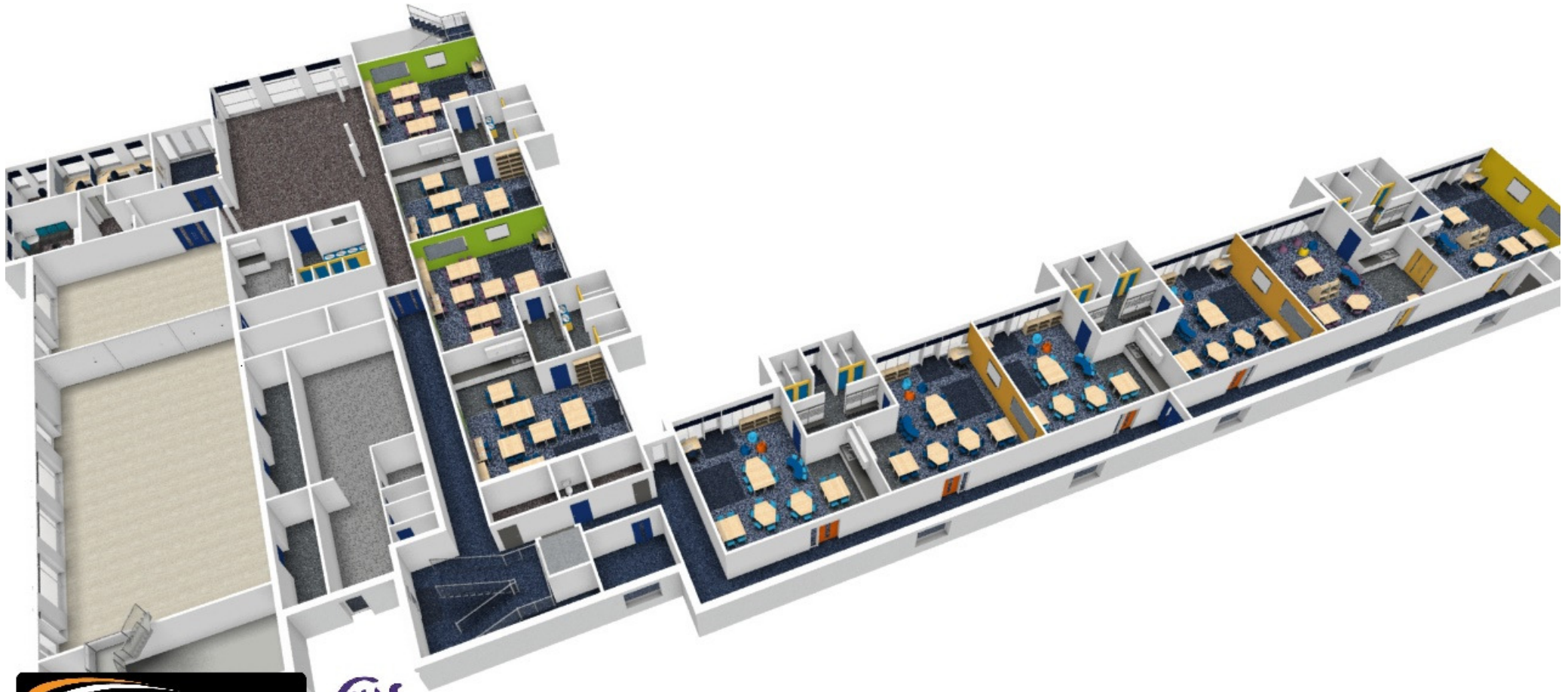
t: 01522 884000 f: 01522 884411 e: sales@toddsline.co.uk web: www.todds.uk.com

TODDS Group Ltd Registered in England & Wales No: 4104537. Registered Office Whisby Way, Lincoln, LN6 3LQ

Plans are for example purposes only © Designs are for product supply of TODDS Group and Copyright Legislation applies.



t: 01522 884000 f: 01522 884411 e: sales@toddsinc.co.uk web: www.todds.uk.com
TODDS Group Ltd Registered in England & Wales No: 4104537. Registered Office Whisby Way, Lincoln, LN6 3LQ
Plans are for example purposes only © Designs are for product supply of TODDS Group and Copyright Legislation applies.



t: 01522 884000 f: 01522 884411 e: sales@toddsinc.co.uk web: www.todds.uk.com

TODDS Group Ltd Registered in England & Wales No: 4104537. Registered Office Whisby Way, Lincoln, LN6 3LQ

Plans are for example purposes only © Designs are for product supply of TODDS Group and Copyright Legislation applies.



web: www.todds.uk.com

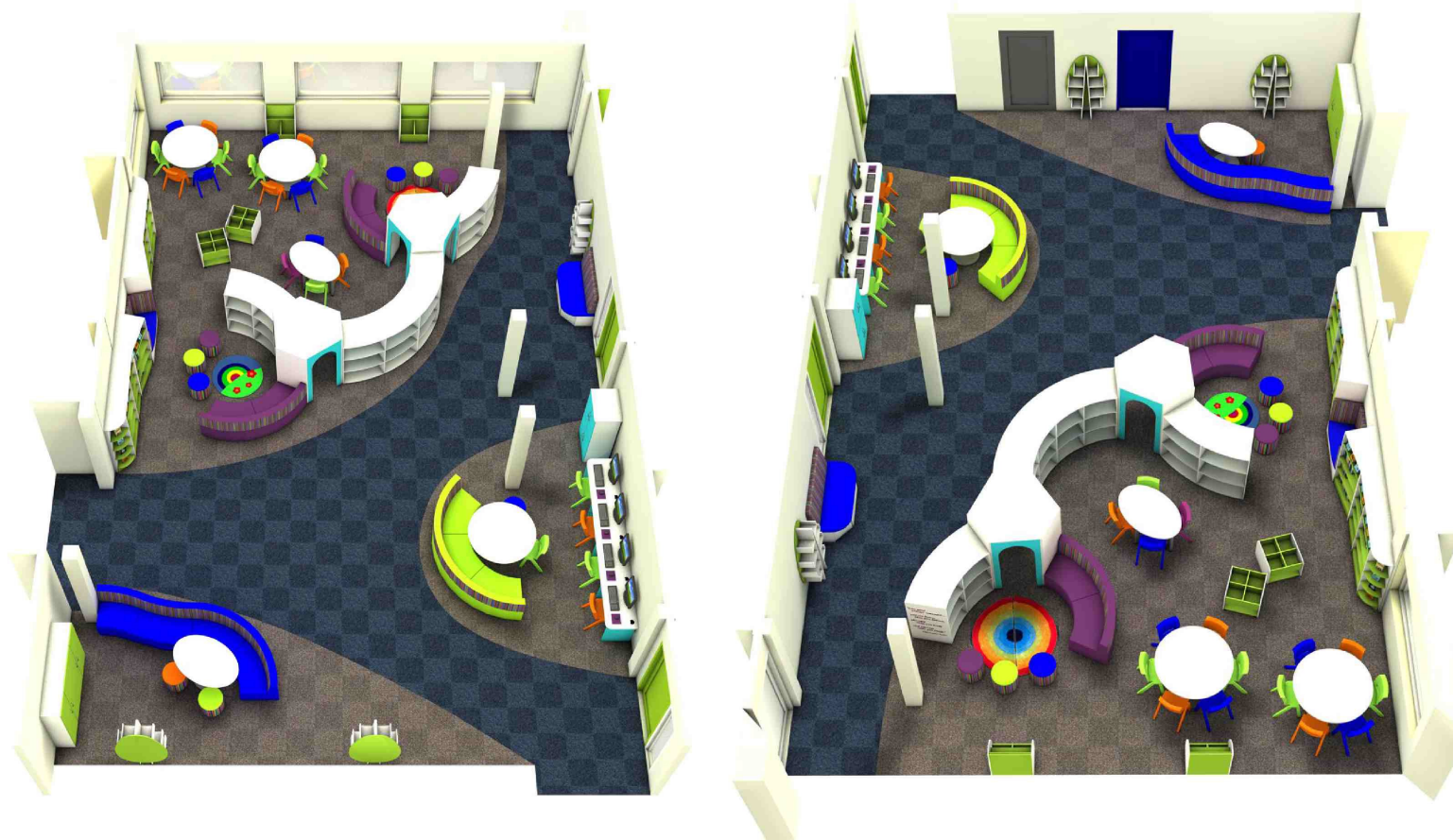
Registered Office Whisby Way, Lincoln, LN6 3LQ

For product supply of TODDS Group and Copyright Legislation applies.

GODMANCHESTER BRIDGE ACADEMY
LIBRARY VIEWS 2

REVISION B

**INCUBE
LIMITED**
© layout and furniture 2017
Drawing number - 3855
Designer - Simon Brown



**FABULOUSLY FUNKY
FURNITURE!**

Questions asked:

- Will the children swim?
 - We are in the process of making arrangements for swimming lessons (transport etc) and will confirm once they are definite, but it is planned for all children to swim at some point during the school year.
- Will there be joint events with GCA?
 - We hope a group of parents would like to form a PTA to arrange GBA events but we will also join some things with GCA until we have established growth – such as discos, summer fayre, Christmas bazaar etc. We would hope to have a GBA sports day; nativity and other sole school events. Volunteers are very welcome to help form a PTA or consider joining the Local Governing Body.
- Site visits
 - We are unable to arrange another visit to the school site for the children before the end of term but we are hoping to arrange an opportunity for parents and children to look around the main new site at the end of the Autumn half term – more information to follow.

Godmanchester Pre-School

If you have children who are not yet of school age, you will be pleased to hear the new Pre-School will be opening in January 2018.

- It will be for children aged 2-4.
- There will be before and after hours provision available.
- It will be run by the Pre-School Learning Alliance and if you would like to find out how to apply for a place for your child, please contact:
- Lynn Harvey: lynn.harvey@pre-school.org.uk
- Their website: <https://www.pre-school.org.uk/parents>

Other Questions?

If you have any other questions about the school or the arrangements for September, please contact the school office:

- office@godmanchesterbridge.co.uk
- 01480 276599

We are happy to help

‘Godmanchester Bridge Academy’

Exciting Times Ahead!

